

# Mobility, Access, and Transportation Insecurity Program

Program Information and RFP Listening Session  
Nov. 13, 2023

MOBILITY, ACCESS &  
TRANSPORTATION INSECURITY:  
*Creating Links to Opportunity Program*



CENTER FOR TRANSPORTATION STUDIES



Federal Transit Administration

# Agenda

Welcome

MATI overview

Questions on program

Public listening session for RFP

**MOBILITY, ACCESS &  
TRANSPORTATION INSECURITY:**  
*Creating Links to Opportunity Program*



CENTER FOR TRANSPORTATION STUDIES



Federal Transit Administration

# What is Transportation Insecurity?

- Unable to reach needed destinations in a timely, safe, and comfortable manner.
- Miss or don't take trips because of lack of stable transportation.
- As with food insecurity where people may not know where next meal is coming from, some populations lack certainty about how they will move.
- Causes missed or limited opportunities and experiences because of lack of resources or access to adequate systemic support.



# MATI Overview

- New program funded by the Federal Transit Administration. Will be administered by the University of Minnesota and MATI program team.
- Attempt to solicit and support community-up ideas. Goal is to not just support innovative interventions, but also to track and evaluate how they impact individual and collective lives.
- Not limited to traditional transportation approaches or modes, nor to transportation alone. Want to see proposals that tie to interconnected issues—housing, health, access to opportunity, education.

MOBILITY, ACCESS &  
TRANSPORTATION INSECURITY:  
*Creating Links to Opportunity Program*



CENTER FOR TRANSPORTATION STUDIES



Federal Transit Administration

# MATI Process

MATI RFP

Review

Phase 1 Sites

Review

Phase 2 Sites

Applicant coalitions submit response to initial RFP proposing a demonstration.

Set of sites selected to participate in Phase 1. Deliverable is a fully developed plan for intervention demonstration. Sites submit plan to MATI team to compete for demonstration project funds.

Subset of Phase 1 sites are selected for demonstration funding. Deliverable is the demonstration itself.

**MOBILITY, ACCESS &  
TRANSPORTATION INSECURITY:**  
*Creating Links to Opportunity Program*



CENTER FOR TRANSPORTATION STUDIES



Federal Transit Administration

# MATI Roles

Task	Applicants and local partners	MATI Team	Federal Transit Administration	MATI Research Committee
Funding			Primary	
Program Management		Primary	Secondary	
Applicant Selection		Primary		
Plan Development	Primary	Secondary		
Deployment and Management	Primary	Secondary		
Data Collection	Primary	Secondary		
Research and Evaluation		Primary		
Program guidance and feedback	Secondary		Primary	Primary

■ Primary
 ■ Secondary

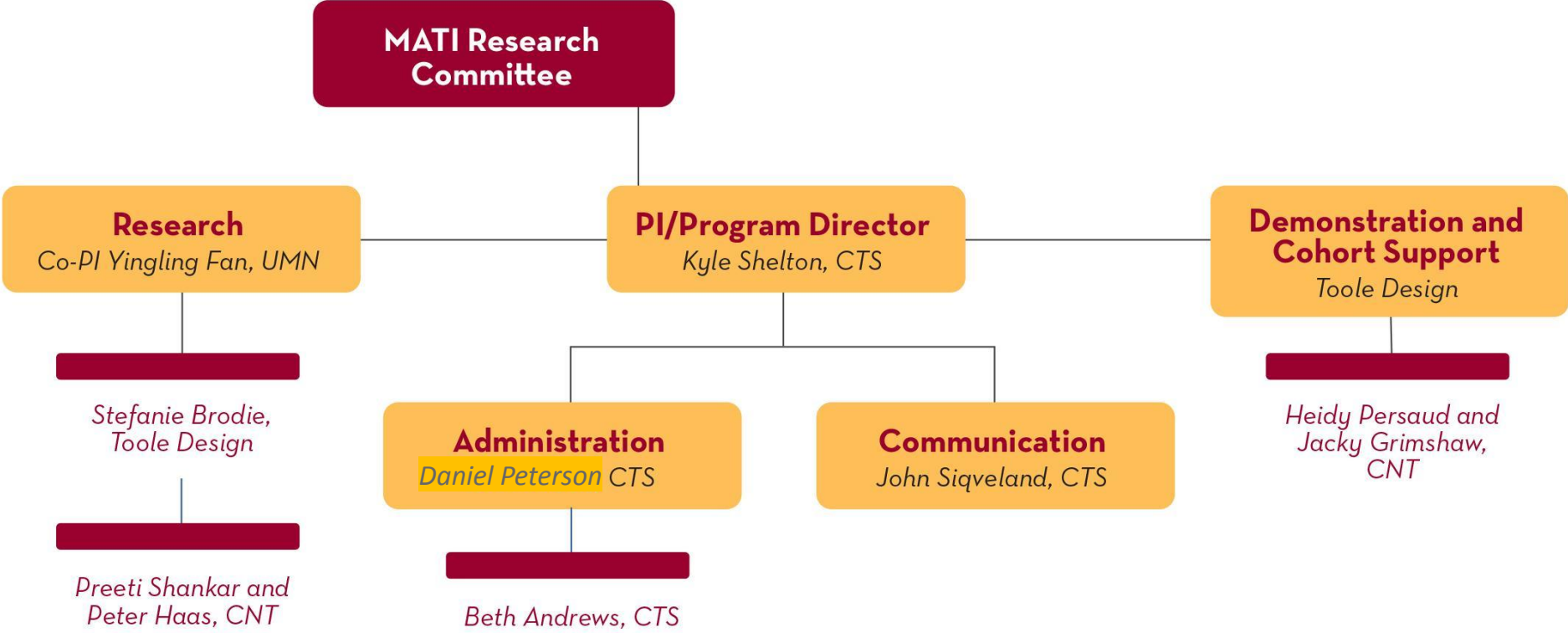


# MATI Overview

- Selected applicants will have MATI team support in the development of a plan for a potential demonstration. MATI team will also evaluate and share research findings from demonstration sites.
- One round of funding, two competitive selection steps. The initial RFP will lead to selection of applicants into the program. Then a second competitive process will select from within that group of Phase 1 plans for demonstration funding.
  - \$4 million in dollars to support 2-phase process—plan development and deployment.
    - Phase 1 awards will be smaller to support staff time, engagement, planning.
    - Phase 2 awards will larger to support deployment, staff time, data collection, engagement.



# MATI Project Team



**MOBILITY, ACCESS &  
TRANSPORTATION INSECURITY:**  
*Creating Links to Opportunity Program*



CENTER FOR TRANSPORTATION STUDIES



Federal Transit Administration



# RFP Timeline

- Public release of MATI RFP in January 2024
- Submissions will be due at least 4 months after posting
- Informational webinars in January and February
- Weekly open office hours in February and March
- Q&A's from webinars and office hours posted to MATI webpage
- Review and selection targeted for late spring 2024



# Program Timeline

- Phase 1 Execution—development and delivery of demonstration plan, Summer-Winter 2025
- Competition to fund demonstration plans, Spring 2025.
- Phase 2 Execution—demonstration projects deployed, Summer 2025-Summer 2027.



# Questions?

**MOBILITY, ACCESS &  
TRANSPORTATION INSECURITY:**  
*Creating Links to Opportunity Program*



CENTER FOR TRANSPORTATION STUDIES



Federal Transit Administration

# Contacts

Kyle Shelton, Director of the Center for Transportation Studies, PI for MATI program.

- [shelt169@umn.edu](mailto:shelt169@umn.edu)

Elizabeth Andrews, Research Administration Manager, MATI Program Manager

- [andr0274@umn.edu](mailto:andr0274@umn.edu)

MOBILITY, ACCESS &  
TRANSPORTATION INSECURITY:  
*Creating Links to Opportunity Program*



CENTER FOR TRANSPORTATION STUDIES



Federal Transit Administration

Bookmark the MATI webpage, sign up for RFP updates!

<https://www.cts.umn.edu/programs/MATI>.



**MOBILITY, ACCESS &  
TRANSPORTATION INSECURITY:**  
*Creating Links to Opportunity Program*



CENTER FOR TRANSPORTATION STUDIES



Federal Transit Administration