



MNDOT / DPS Coordinated Incident Response Regional Transportation Management Center

John McClellan | Freeway Operations Supervisor

12/5/19

RTMC overview

Joint dispatch facility:

- DPS State Patrol Dispatch
- MNDOT Metro Maintenance Dispatch
- MNDOT Freeway Operations (TMC)

Total building size: 53,000 square feet

- Dispatch area: 10,000 square feet.



RTMC Dispatch Floor



State Patrol 911/Dispatch



MNDOT Metro Maintenance Dispatch



MNDOT Freeway Ops



Tools

- ~800 Metro cameras + 200 Greater MN
- ~ 200 Metro overhead message boards + 100 Greater MN
- All dispatchers on the floor have full camera access.
- Software that runs camera video & message boards is in-house developed, open source.
- State Patrol CAD software integrated with DOT response.
- Shared radio channels on ARMER system



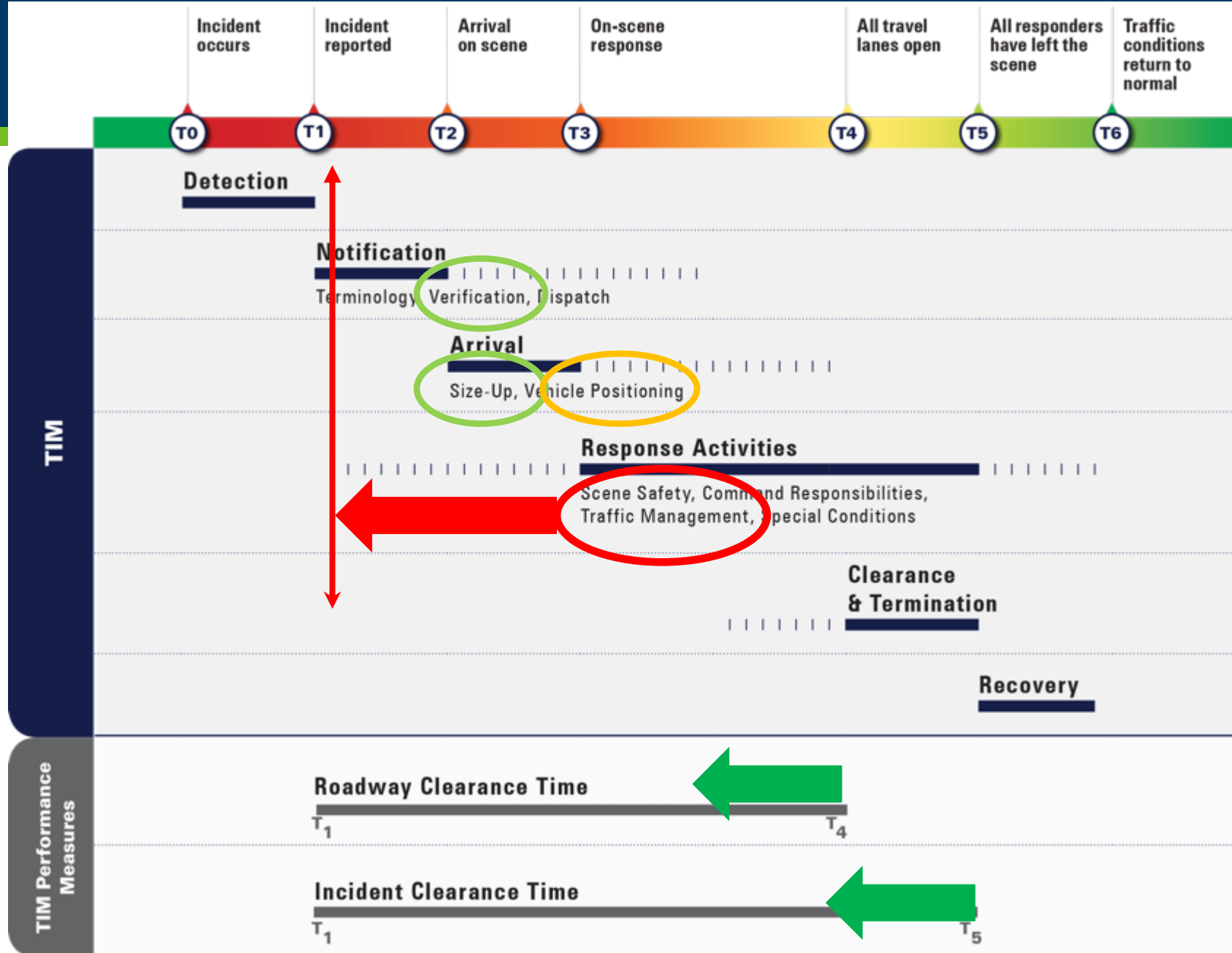
Freeway Incident Response Safety Team (F.I.R.S.T.) Dispatch



$\frac{3}{4}$ ton pickups



RTMC Overall goal



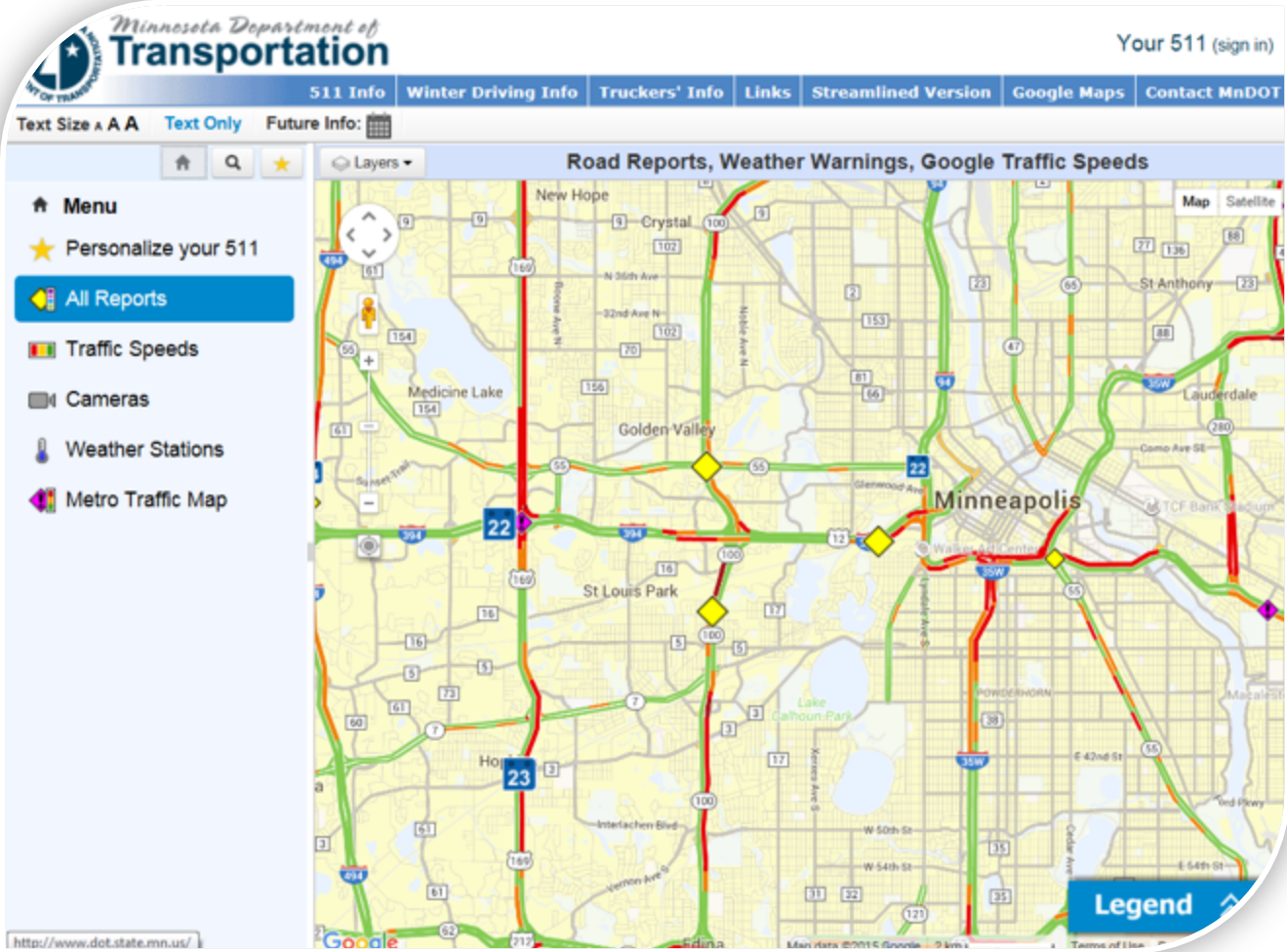
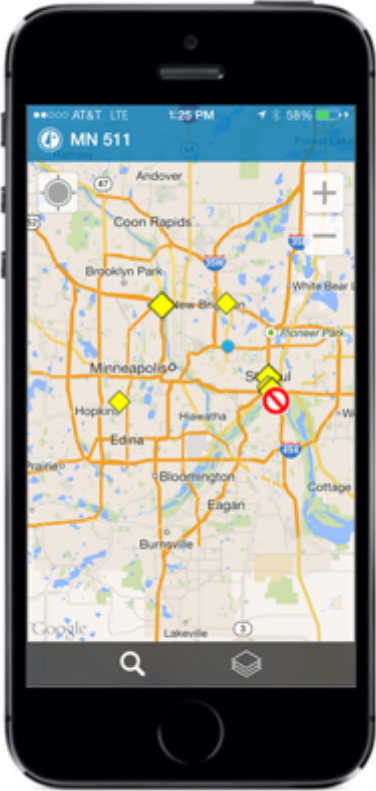
- Absolutely!
 - Overhead signs up for early warning to drivers
 - Verified location = quicker response
 - Cancelling response for things that drive off
 - Moving minor crashes to safer locations, off the right-of-way.
 - Overheat vs. car fire, starting salt for real fires, calling tows when obvious...
 - Upgrading incident traffic control – bigger, safer, brighter.
 - Minor to medium to major....

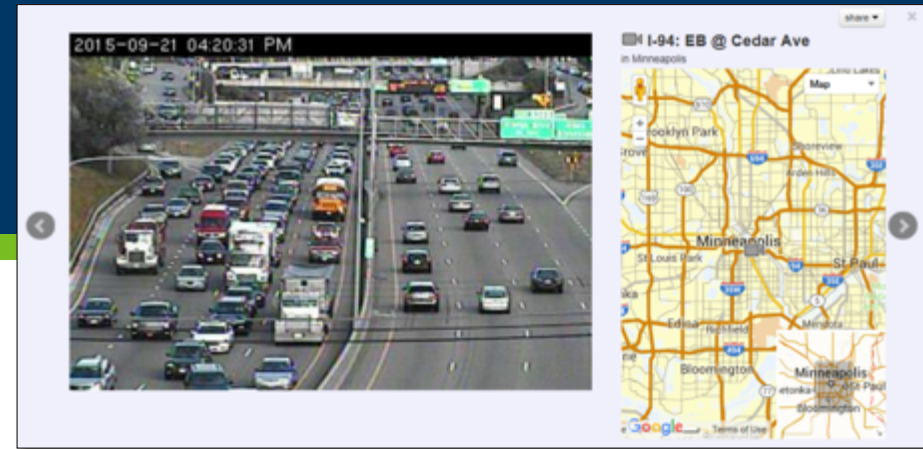
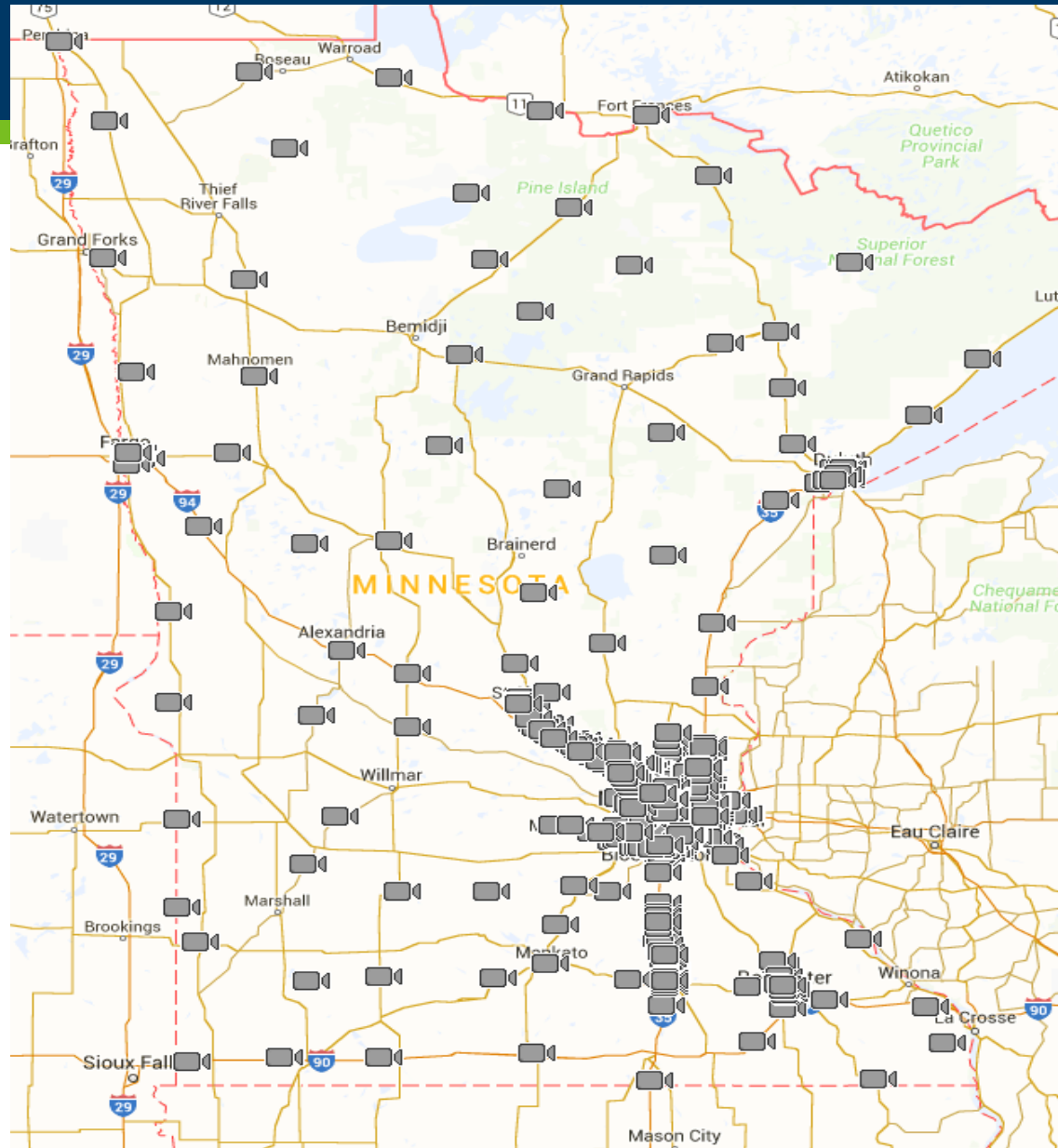
Major event coordination

- 2007 - 35W bridge collapse
- 2008 - Republican National Convention
- 2011 - 35W gas main explosion
- 2016 & 2017 – Mass protests
- 2018 - Super Bowl 52
- 2019 – NCAA Final Four & POTUS/VPOTUS visit



Traveler Information





- Traffic cameras
- RWIS cameras
- Working on streaming video to public
- Congestion
- Incidents (24/7 from CAD)

Blizzard Warning

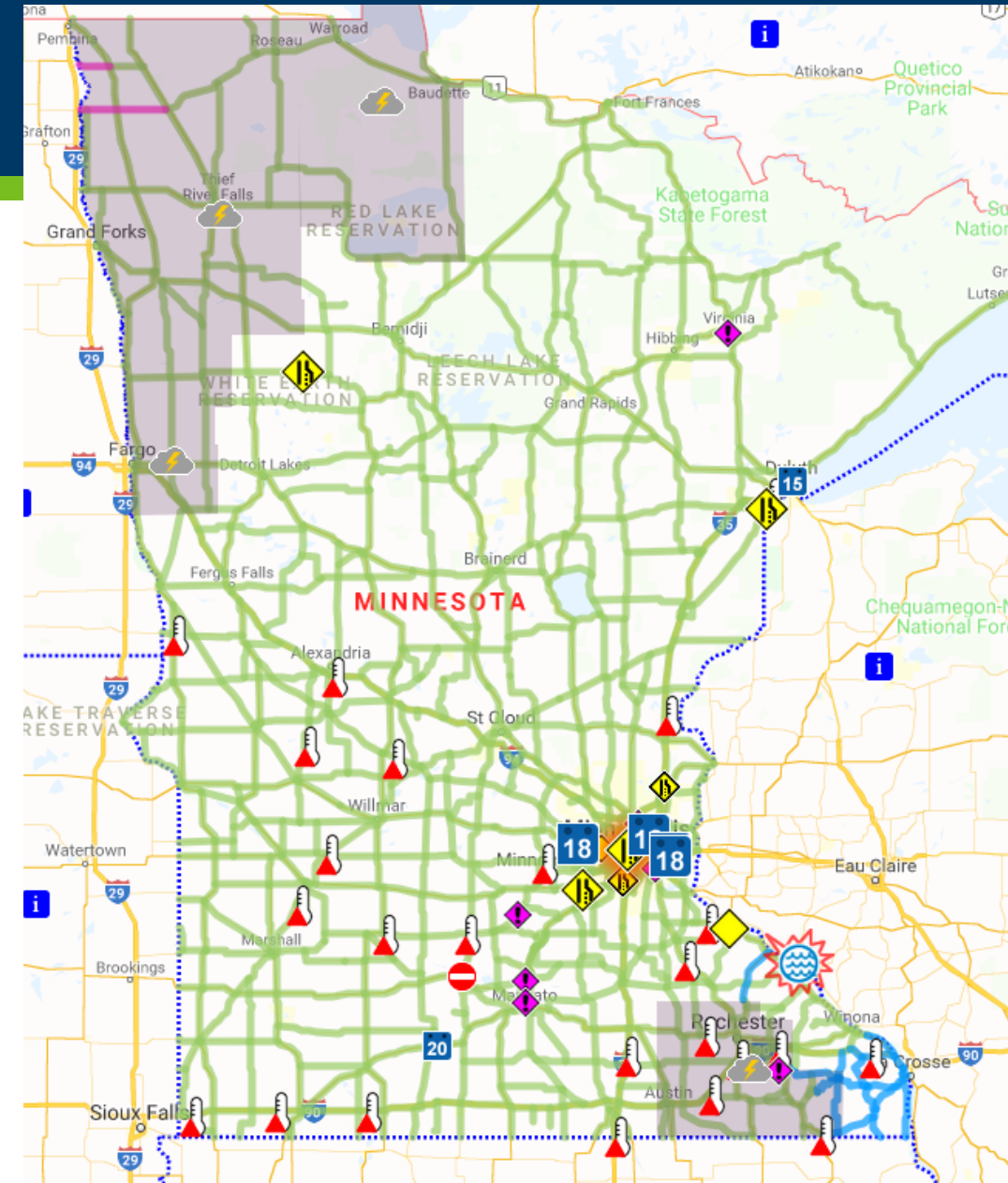
9 -zone area. A Blizzard Warning is in effect. For the next day.

Blizzard Warning issued March 13 at 1:40PM CDT expiring March 15 at 1:00AM CDT by NWS Grand Forks ND

* WHAT...Blizzard conditions expected. Total snow accumulations of 6 to 12 inches, higher amounts of 18 inches possible and ice accumulations of a light glaze possible. Winds gusting as high as 60 mph. * WHERE...Portions of northwest Minnesota and northeast and southeast North Dakota. * WHEN...From 7 PM this evening to 1 AM CDT Friday. * ADDITIONAL DETAILS...Travel will be dangerous to impossible. Widespread blowing snow will significantly reduce visibility. The hazardous conditions will impact the morning and evening commute. Strong winds could cause extensive damage to trees and power lines.

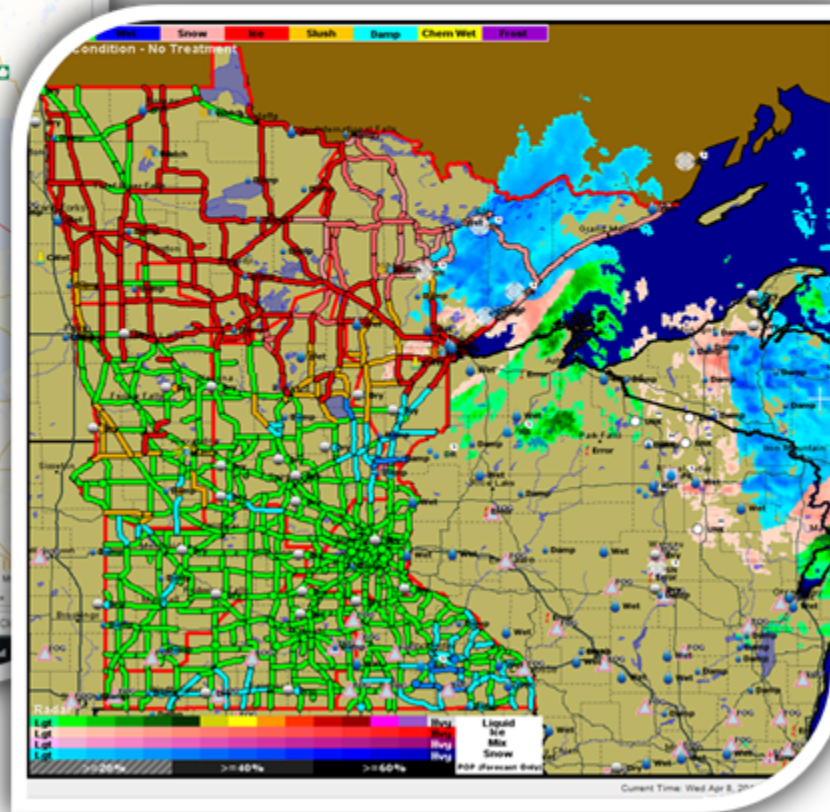
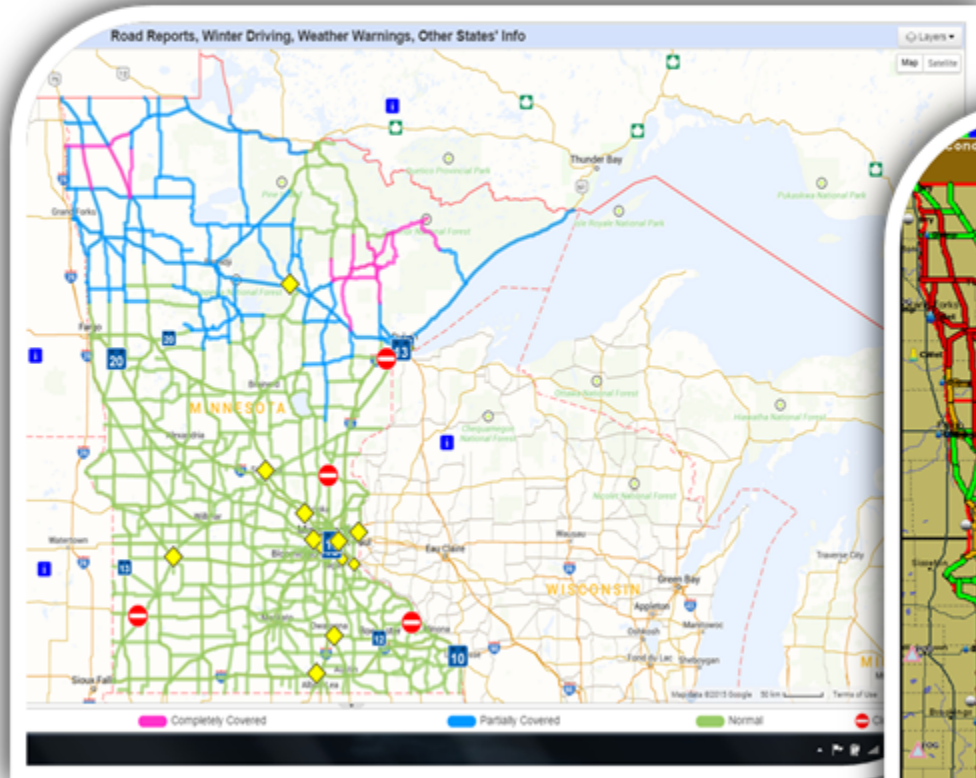
[Full NWS alert](#)

⏪ 🌩️ Last updated Today at 1:40 PM CDT by NWS



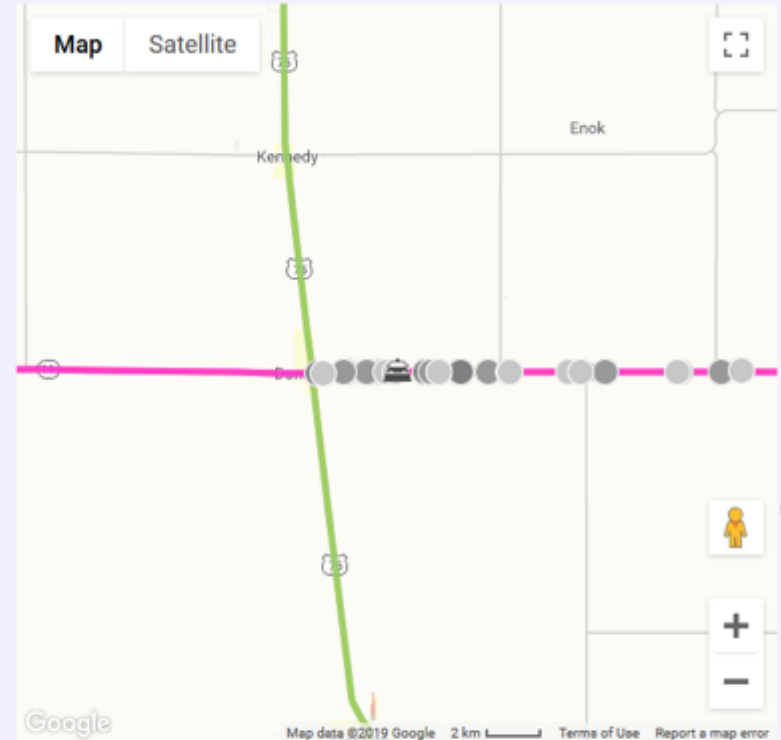
- Road conditions reported from field
- Weather stations
- NWS weather warnings

MDSS/Segments Integration



Plow cameras & locations

MN 11: Snow Plow Camera Today at 2:10 PM CDT



Rest area truck parking

R I-94: Lake Latoka Rest Area EB

OPEN 24 of 38 Truck Parking Spaces Available

Last updated: Today at 2:11 pm

Hours of Operation

24 hrs 7 days/week

Amenities



Additional Information

Direction of Travel: Eastbound

Mile Marker: 99.6

Nearest Town: Alexandria

[Subscribe to mobile notifications](#)

Nearby Driving Conditions

I-94: Normal driving conditions.

Between the start of I-94 (Moorhead) and Exit 205: MN 241 (near Rogers).
Driving conditions are normal.

Last updated: Today at 5:19 am

Looking for the next truck parking area? [?](#)

I-94: Big Spunk Rest Area EB is 52 miles from here on I-94 at mile marker 151.7

OPEN - 6 of 16 Truck Parking Spaces Available

Last updated: Today at 2:15 pm



FIXED VIEW



FIXED VIEW



Thank you!

John McClellan

John.mcclellan@state.mn.us

651-234-7025