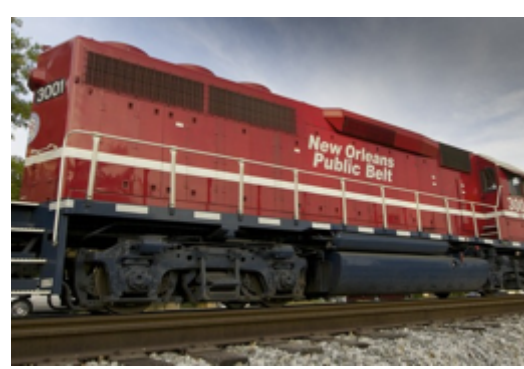


*Hurricane Katrina:*  
Response and Recovery  
Efforts Post Katrina: A 14  
Year Analysis



**Bethany Stich, Ph.D**  
**Director, UNO Transportation Institute**  
**Department of Planning and Urban Studies**  
**[bstich@uno.edu](mailto:bstich@uno.edu)**



# Katrina Devastation

- First ever mandatory evacuation of the city  
8/28/2005
- 26,000 residents at the Superdome
- 1,836 people died
- 53 breaches in surge protection levees
- 80% of the city was flooded
- 2/3 caused by multiple failures of the city's floodwalls
- \$125 Billion in damages
- Displaced over 1 million people



# Outline

- Lessons Learned
- Remaining Issues
- Innovative Solutions
- New Challenges



# Lessons Learned

- People to People
- Use Everything
- Share Everything
- Don't be a Victim
- Decide
- Commerce Will Find a Way

# People to People

- Establish Relationships
- Prepare/Mitigate
- Trust
- Practice
- Politics is irrelevant



# Use Everything

- Debris removal
  - From problem to asset
  - Creativity
- Opportunity



# Share Everything

- Nothing is proprietary in a disaster
  - Codify
  - Train
  - Trust
- Public-Public
- Private-Public
- Misinformation



# Don't be a Victim

- Redundancy outside of the disaster zone
- Help for those that have to help
- Replace those who need replacement
- Plan for the inevitable
  - Human Resource
  - Basic Necessities





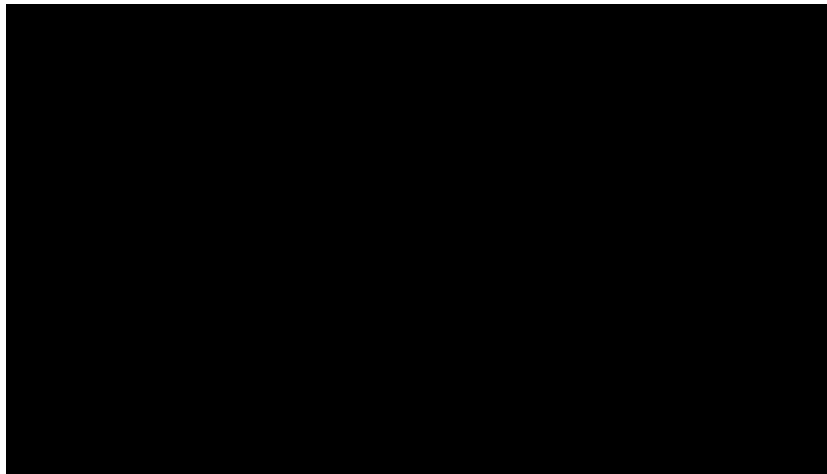
# Decide

- Time
- Preparation
- Risk
- Determination



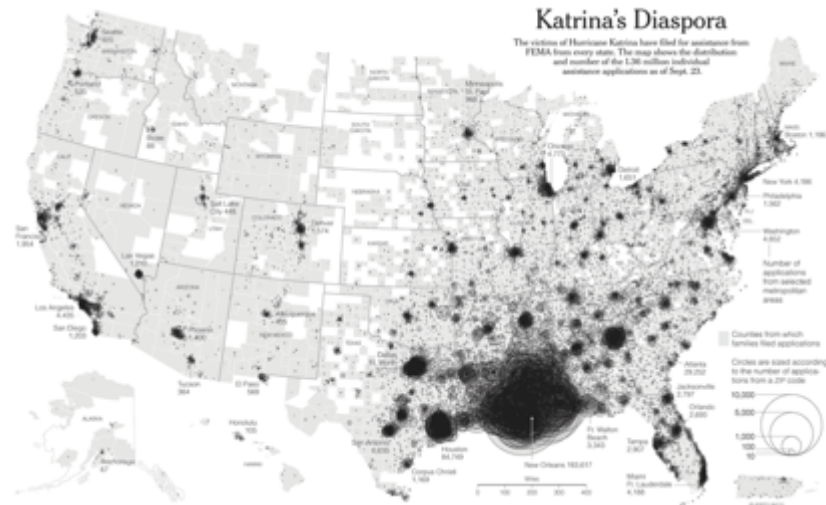
# Commerce Will Find a Way

- Port of New Orleans
  - Value
  - System Breakdown
- Recovery and Resilience



# Remaining Issues

- Federal Policy
  - Replace in-kind
- Population Loss
  - Houston victimization
  - Culture loss
- Housing Loss (200,000)
- Community
  - Charity Hospital
  - <https://vimeo.com/122496816>
  - Public Housing (5,000 to 1,900)
- Communication



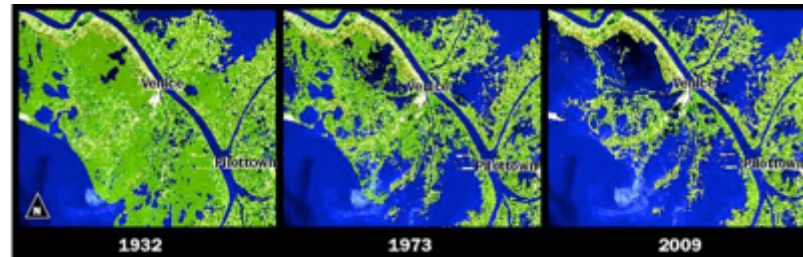
# Innovative Solutions

- Adopt a Catch Basin
- Evacuspots
- Cajun Navy
- Big Data
  - Social Media
  - Information exchange
- 3D Printing

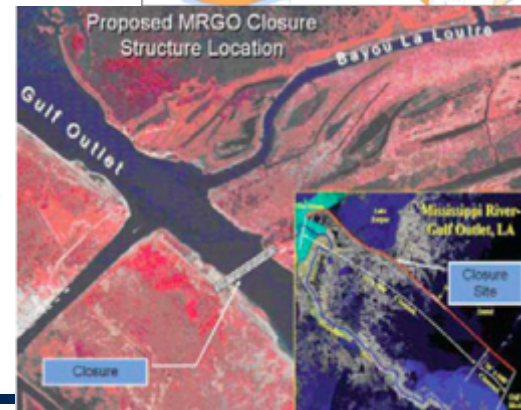
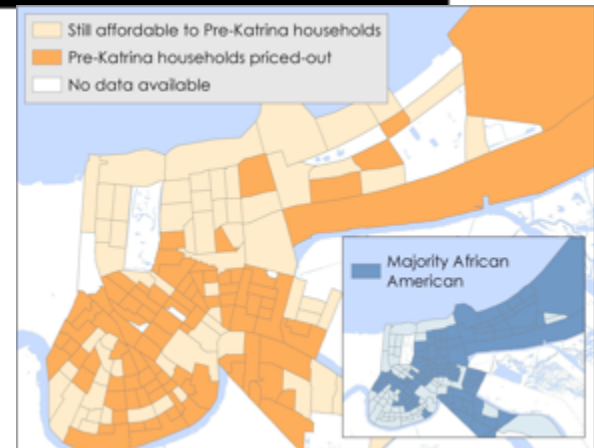


# New Challenges

- Coastal Erosion
  - Land loss
  - Barrier Island Protections
- Gentrification (46%)
  - Population Change
  - Culture constraints
- Housing Prices
- Commerce Constrained
  - Mississippi River Gulf Outlet
- Cyber Security



Source: U.S. Geological Survey, NASA



# Thank you

